

13" FLOOR DRILL PRESSES W/LASER

- Spindle is supported by high quality ball bearings
- Cast-iron pulleys reduce vibrations
- Comes with non-slip rubber feed handles
- 45° tilting table for angular drilling
- Locking depth stop for accurate repetitive blind hole drilling
- Includes: 5/8" drill chuck, and key
- Light socket incorporated into drill press head (standard light bulb not included)



Model No.	TM209
Mfg. No.	KC-116FN
Chuck size:	5/8"
Max. distance chuck to table:	23 1/2"
Max. distance chuck to base:	45"
Table size:	11 3/4"
Speeds:	16 (220-3600 RPM)
Spindle Taper:	#2 Morse
Motor:	7.5 A, 1 phase, 60 Hz
Voltage:	110 V
Dimensions:	11 3/4" L x 24" W x 62 1/2" H
Weight:	120 lbs.
Price/Each	\$

13" DRILL PRESSES W/LASER

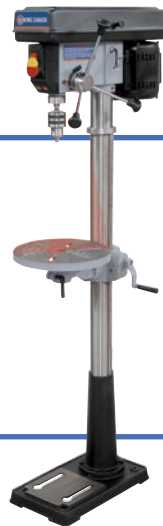
- Spindle is supported by high quality ball bearings
- Cast-iron pulleys reduces vibrations
- Comes with non-slip rubber feed handles
- 45° tilting table for angular drilling
- Locking depth stop for accurate repetitive blind hole drilling
- Includes: 5/8" drill chuck, key and 4" vise
- Light socket incorporated into drill press head (standard light bulb not included)



Model No.	BV666
Mfg. No.	KC-116N
Chuck size:	5/8"
Max. distance chuck to table:	13 3/4"
Max. distance chuck to base:	26"
Table size:	12 13/16"
Speeds:	16 (210-3670 RPM)
Spindle Taper:	#2 Morse
Motor:	7.5 A, 1 phase, 60 Hz
Voltage:	110 V
Dimensions:	12 13/16" L x 25" W x 42" H
Weight:	125 lbs.
Price/Each	\$

15" FLOOR DRILL PRESSES W/LASER

- Spindle is supported by high quality ball bearings
- Cast-iron pulleys reduces vibrations
- Comes with non-slip rubber feed handles
- 45° tilting table for angular drilling
- Locking depth stop for accurate repetitive blind hole drilling
- Includes: 5/8" drill chuck, key and 4" vise
- Light socket incorporated into drill press head (standard light bulb not included)



Model No.	TM211
Mfg. No.	KC-117FN
Chuck size:	5/8"
Max. distance chuck to table:	23"
Max. distance chuck to base:	44 1/2"
Table size:	13 5/8"
Speeds:	16 (210-3670 RPM)
Spindle Taper:	#2 Morse
Motor:	8.5 A, 1 phase, 60 Hz
Voltage:	110 V
Dimensions:	13 5/8" L x 25" W x 63 1/2" H
Weight:	157 lbs.
Price/Each	\$

CHUCK SAFETY GUARDS



TJZ763



TJZ764



TJZ765



Model No.	Mfg. No.	Description	Price /Each
TJZ763	KM-116	Drill press chuck safety guard for BV666 and TM209	
TMA035	KM-117	Drill press chuck safety guard for TS206 and TM211	
TJZ764	KM-118	Drill press chuck safety guard for TM213	
TJZ765	KM-122	Drill press chuck safety guard for TM214	